

HV APEX[®] 280 DIRECT MATE



APEX[®] 280 2 Way

DIRECT MATE BENEFITS

- Same connector for both bundle and individual cable shielding
- Cost effective thanks to unshielded terminal holder replacing traditional shielded headers
- High EMC & RFI shielding performance thanks to direct connection to metal device case

APEX[®] 280 DIRECT MATE FEATURES

- Two HV power circuits (APEX[®] 2.8 mm terminal)
- Bundle shielding with external braid in serial production
- Individual cable shielding version available by request
- Integrated HVIL (HV interlock line)



AVAILABLE CONFIGURATIONS

Connector Type	Wire-to-device
Cable Exit Orientation	180
Cable Range	2.5 to 6 mm ²
Terminal Type	Apex 2.8
# of Power Terminals	2
Shielding	Bundle (also compatible for individual cable shielding)
HVIL	Pass through or shunt on header
Assembly Assurance	None (screwed)
Number of Indexes	No



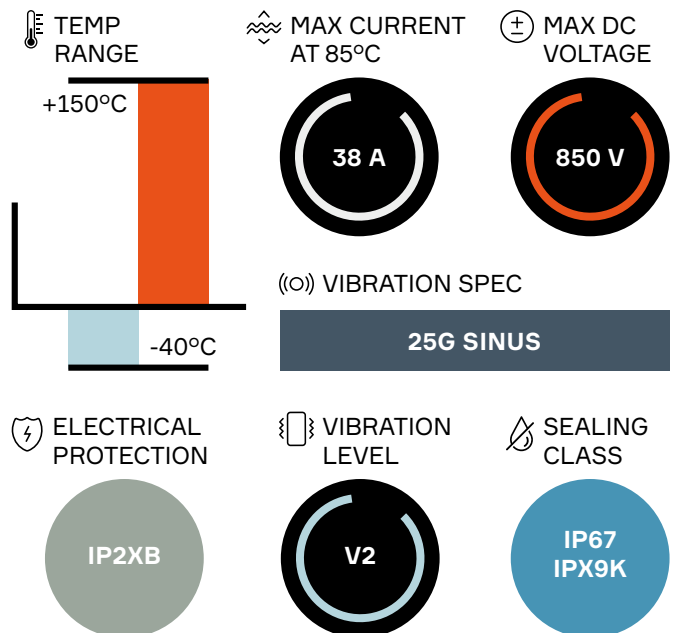
APPLICATIONS

HV Air Conditioning, PTC Heater, DC/DC Converters, Auxiliary Devices

See back page for representative part numbers and packaging dimensions.



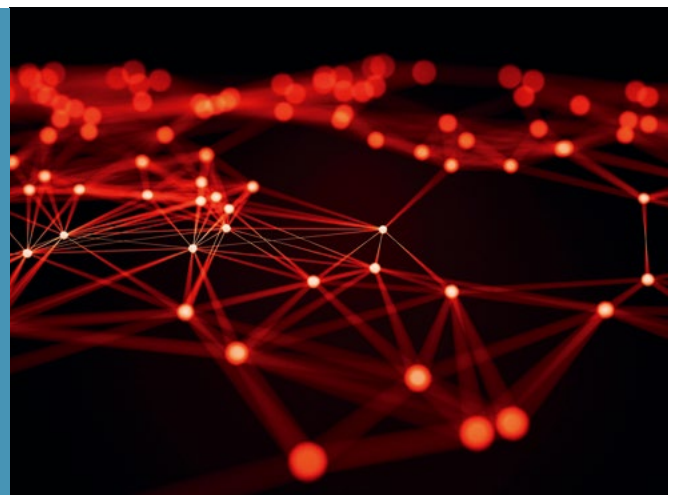
TECHNICAL CHARACTERISTICS



About Aptiv

Aptiv is a global technology company that develops safer, greener and more connected solutions enabling the future of mobility. Headquartered in Dublin, Aptiv has approximately 150,000 employees and operates 14 technical centers, as well as manufacturing sites and customer support centers in 45 countries.

Visit aptiv.com





PART NUMBERS

Part number	# of ways	Gender	Terminal size (mm)	Wire range	Exit orientation	Index	Mating part number
35208936	2	Female	2.8	2.5 to 6 mm ²	180°	-	NA

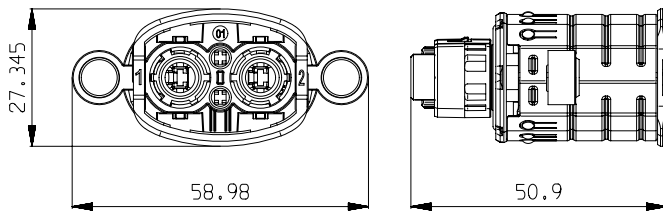


ASSOCIATED PARTS

Part number	Description
54001400	Apex 2.8 female term 2.5 mm ²
54001208	Apex 2.8 female term 4 - 6 mm ²
13834764	SWS for wire from 3.4 to 4.4 mm dia
35206690	Retainer
60001224	DCS 1.5 female terminal for 0.35 mm ²
60001234	DCS 1.5 female terminal for 0.5 to 1.0 mm ²
60993913	DCS 1.5 SWS for 0.35 to 0.5 mm ²
60993928	DCS 1.5 SWS for 1 mm ²



DIMENSION MEASUREMENT SAMPLE



35208936

Part numbers, specifications, dimensions and performance data in this document are for general references only and are subject to change without notice. To verify product information, please contact an Aptiv representative.

CS-SP92-HV-En0219