

Product Overview

The CTS system is an unsealed and sealed terminal system, tab size 1,5 x 0,6 and 1,5 x 0,8. The CTS system was developed by Delphi Connection Systems to be compatible with Volkswagen QKK cavity dimensions and to outperform competitive systems. The system design provides high-quality contact forces with minimal insertion forces.

Market Segments

Automotive
Non-Automotive

Features and Benefits

- 2-piece Contact system
- Mating tab 0,6 and 0,8 mm with one part number
- Unsealed and sealed versions available
- Compatible to QKK cavity requirements
- Minimized mating force
- Preloaded support spring at sleeve
- Stable contact force at high temperature
- Secondary lock from four sides possible
- Vibration resistant

Application Guidelines

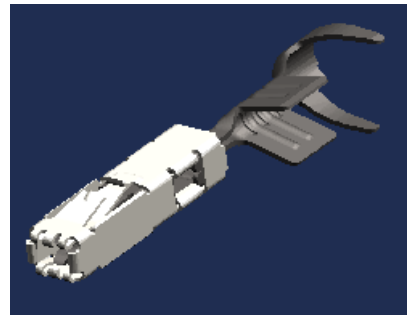
Crimp sizes:

0.22-0.35mm², 0.5-1.0mm², 1.0-1.5mm²

Tin-plated

Max current capacity 19A

Temperature range -40° ...135°



Terminal Crimp Tooling

Delphi Global Crimp Tooling

PSG Hand Crimp Tool

NOTE: For correct reference of terminal part number to the hand crimp tool please contact your Power & Signal Group Representative.

Terminals

15332208	female, sealed, tin, 0.22-0.35mm ²
15432210	female, sealed, tin, 0.50-1.0mm ²
15432212	female, sealed, tin, 1.0-1.5mm ²
15432237	female, unsealed, tin, 0.22-0.35mm ²
15432235	female, unsealed, tin, 0.50-1.0mm ²
15432233	female, unsealed, tin, 1.0-1.5mm ²
15432231	female, double crimp, tin, 1.0-1.5mm ²

For pricing and samples, contact your Power & Signal Group Representative. Or, visit us on the web at www.powerandsignal.de.

For drawings, data sheets or 3-D CAD models, call our engineering department.

Revision 1: 11-Aug-04

World Headquarters

4670 Richmond Road, Suite 120
Cleveland, OH 44128-5918
(216) 378-6600
(800) 722-5273

European Headquarters

Itterpark 11
D-40724 Hilden
Germany
+49 2103 250 0

Asian Headquarters

9/F, Phase 2, East Ocean Center
618 Yan An Road East
Shanghai 200001, PRC
+86 21 5306 1871



Compact Terminal System (CTS)

World Headquarters

4670 Richmond Road, Suite 120
Cleveland, OH 44128-5918
(216) 378-6600
(800) 722-5273

European Headquarters

Itterpark 11
D-40724 Hilden
Germany
+49 2103 250 0

Asian Headquarters

9/F, Phase 2, East Ocean Center
618 Yan An Road East
Shanghai 2000001, PRC
+86 21 5306 1871

This document was created with Win2PDF available at <http://www.daneprairie.com>.
The unregistered version of Win2PDF is for evaluation or non-commercial use only.