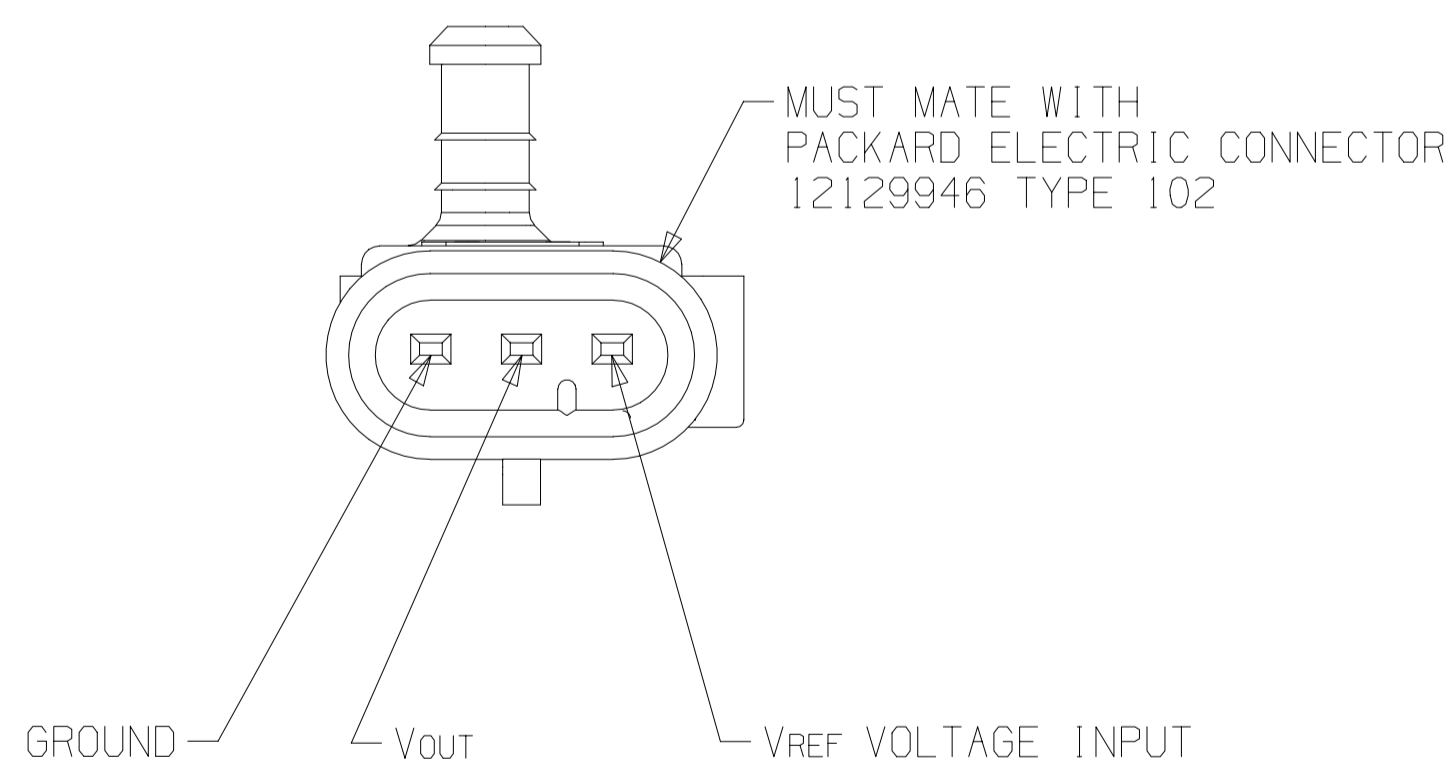
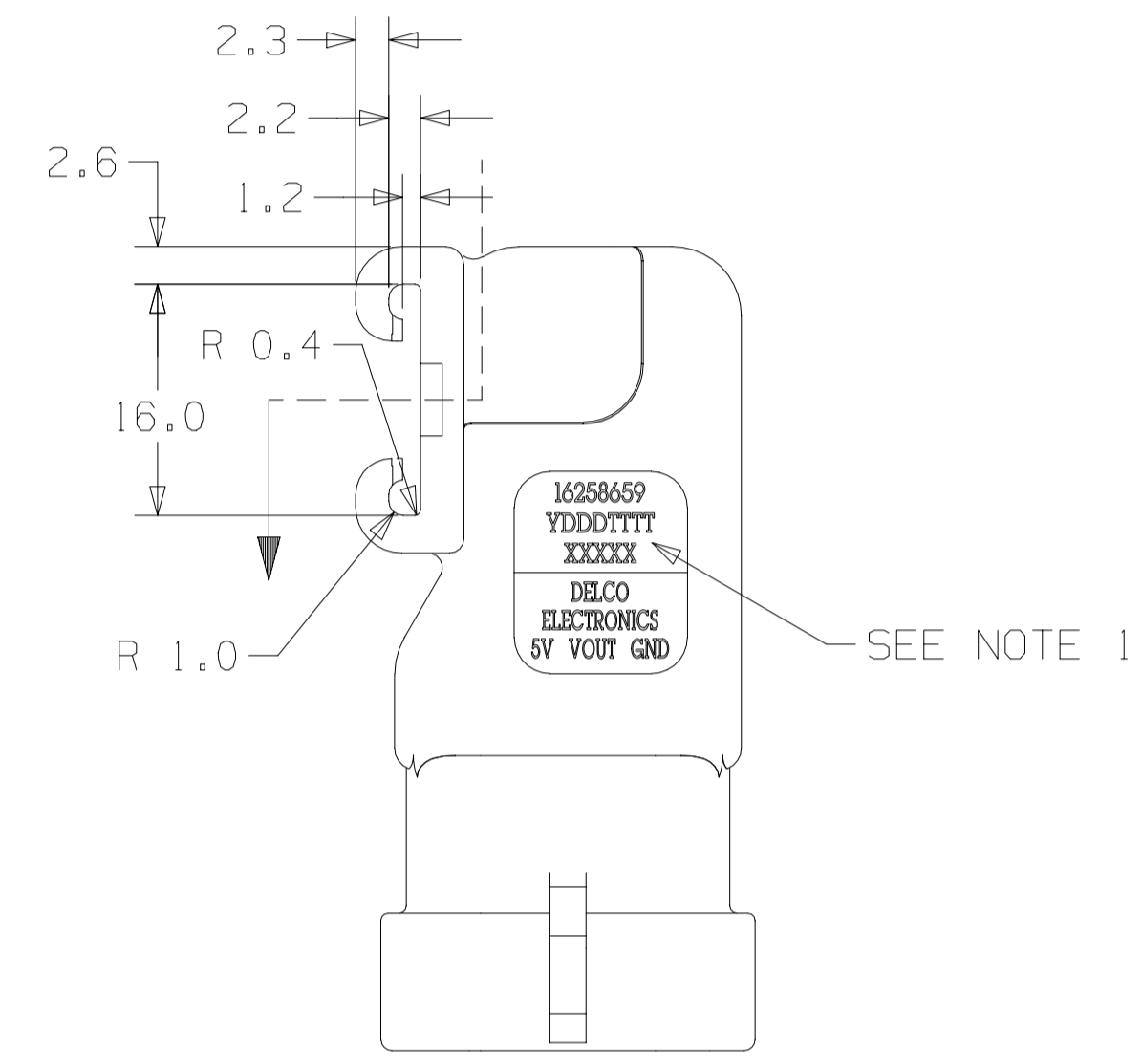
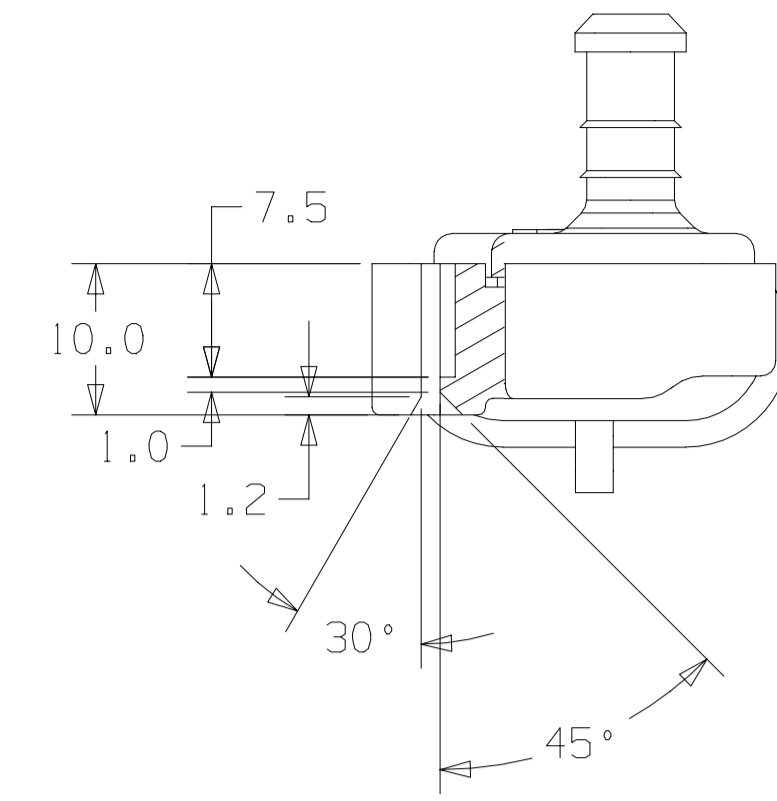
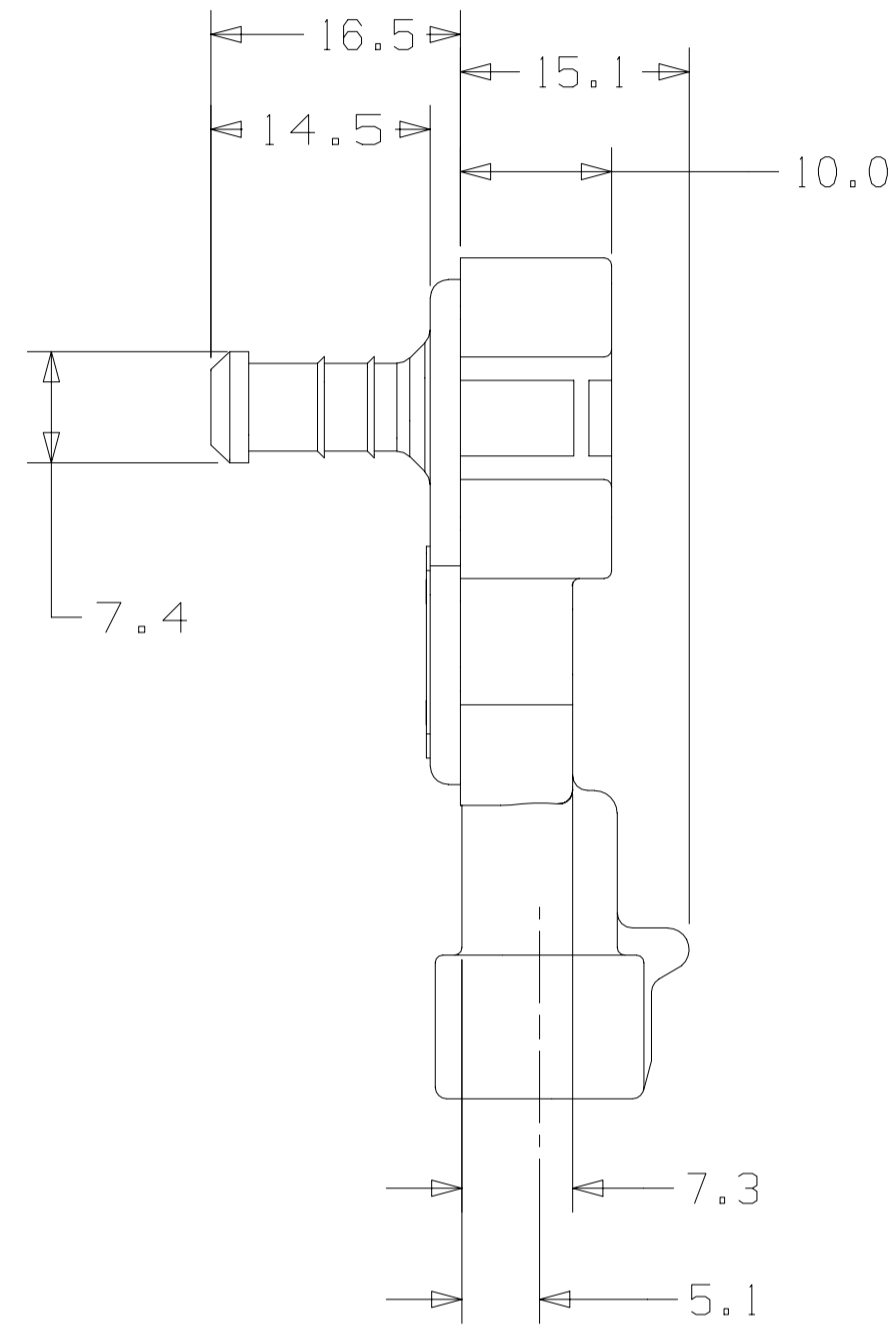
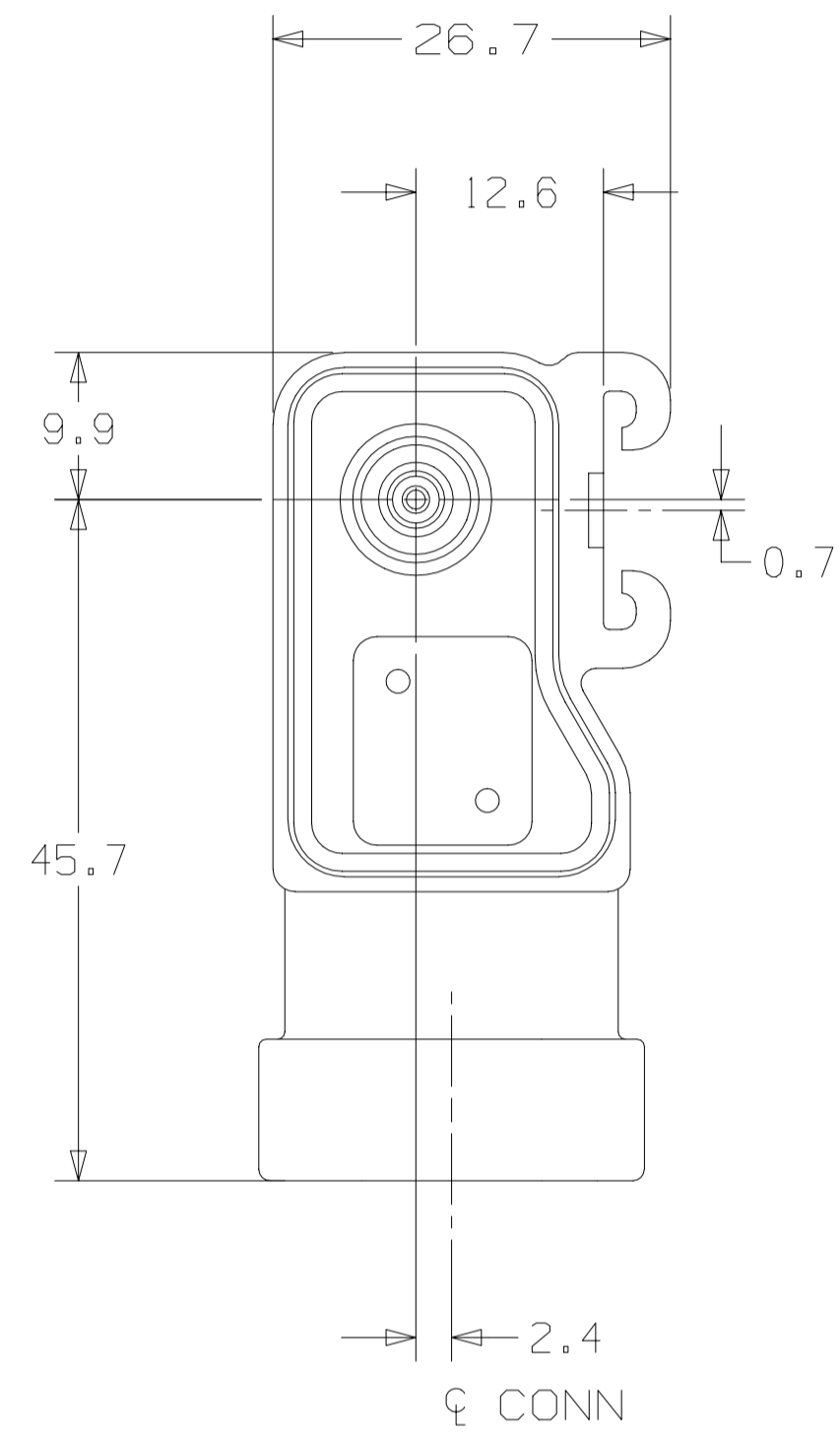
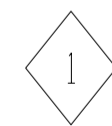


DL	DATE	SYM	REVISION RECORD	AUTHORITY	DR	AP
--	16AP97	A	RELEASED-PRODUCTION	27532		
	15JA98	B	REVISED LABEL OVER VENT	127821	DEW	LFB



1. LABEL INFORMATION

- 1.1 FIRST LINE IS PART NUMBER.
- 1.2 SECOND LINE IS DATE CODE. FIRST DIGIT REPRESENTS THE YEAR, NEXT THREE DIGITS REPRESENT THE DAY OF THE YEAR, AND THE REMAINING DIGITS REPRESENT THE LOT NUMBER.
- 1.3 THIRD LINE IS THE COUNTRY OF ORIGIN.



2. $V_{out} = V_{ref} (0.01059 * P - 0.10941)$

$V_{ref} = 5.0 \pm 0.1$ VOLTS

P = PRESSURE IN kPa

PRESSURE ERROR IN kPa

INPUT PRESSURE	ALLOWABLE ERROR
20	±2.4
40	±1.5
94	±1.5
102	±1.7

TEMPERATURE MULTIPLIER FOR ALLOWABLE PRESSURE ERROR

TEMPERATURE	MULTIPLIER
-40	2
10	1
85	1
105	2

- 3. RECOMMENDED MOUNTING PROCEDURE FOR THE PRESSURE SENSOR IS TO HAVE THE PORT POINTING DOWN WITHIN 30° OF VERTICAL. THE PRESSURE SENSOR SHOULD BE MOUNTED HIGHER THAN THE VACUUM SOURCE. CONNECTING TUBE NOT TO SAG BELOW HORIZONTAL. 250 MAXIMUM TUBE LENGTH.

SCALE 2/1 DIST DIST CODE:

METRIC \leftarrow mm \rightarrow
 UNLESS OTHERWISE SPECIFIED; ALL DIMENSIONS ARE IN MILLIMETERS, AND THE TOLERANCES ARE:
 ONE PLACE DECIMALS ± 1.0
 TWO PLACE DECIMALS ± 0.20
 ANGLES ± 2°
 DRAFT ANGLES - 2°
 SHARP CORNERS - R 0.50

GD&T SEE ANSI Y14.5M-B2 FOR GD&T INTERPRETATION CHANGES ALLOWED ONLY BY PDM DOCUMENT PROCEDURES
PDM
UG DO NOT SCALE \oplus THIRD ANGLE PROJECTION

FIRST USED 16258659	DES D.E. WHITSON	17MR97
REFERENCE PRESS SNSR	APR LEONARD F. BAXTER II	16AP97
EXP MODEL	APR N/A	
EXP NUM	APR N/A	

RESTRICTED AND REPORTABLE CHEMICALS PER GM1000M

KEY PRODUCT CHARACTERISTICS	
SAFETY/COMPLIANCE	FIT/FUNCTION
TOTAL ON DRAWING	1
LAST NUMBER USED	1

MATERIAL SPEC	DRAWING NAME OUTLINE-P/SNSR
PART NUMBER 16258659	SHT 1 OF 1