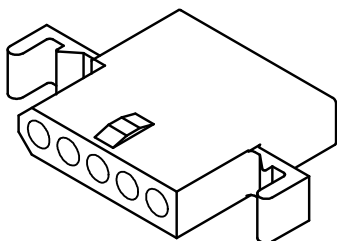
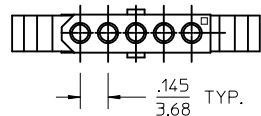
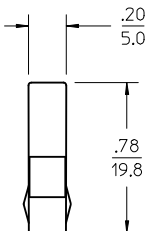
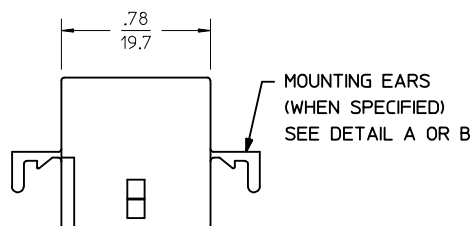
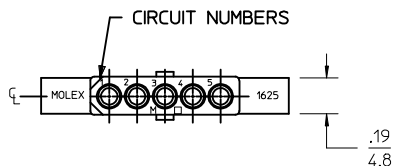
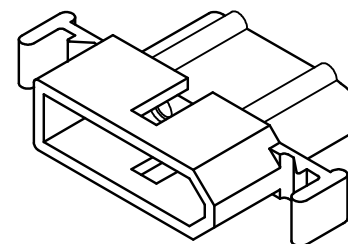
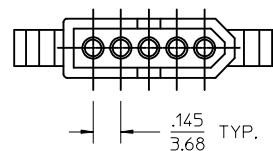
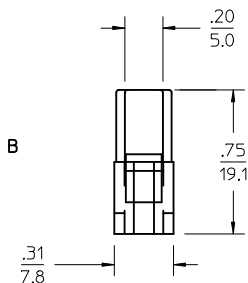
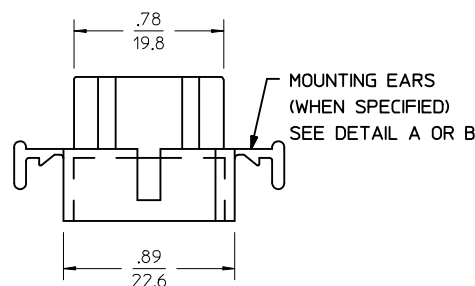
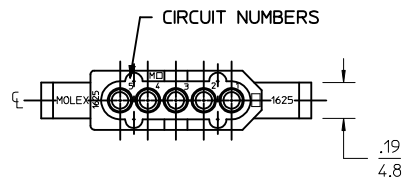


RECEPTACLE



RECEPTACLE HOUSING
SHOWN WITH STANDARD EARS

PLUG



PLUG HOUSING
SHOWN WITH STANDARD EARS

PK SPEC EC NO: UCP2015-0466 DRAWN: JDFOX CHKD: MKIPPER APPR: FSMITH	DESCRIPTION 2014/08/06 2014/08/06 2014/08/14	QUALITY SYMBOLS	GENERAL TOLERANCES (UNLESS SPECIFIED)	DIMENSION STYLE IN/MM	SCALE 2:1	DESIGN UNITS INCH	THIRD ANGLE PROJECTION
		▽=0 ▽=0 ▽=0	mm INCH 4 PLACES ± --- ± --- 3 PLACES ± --- ± .010 2 PLACES ± 0.25 ± .01 1 PLACE ± 0.35 ± --- 0 PLACE ± --- ± ---	DRAWN BY DATE JDFOX 2014/08/06 CHECKED BY DATE MKIPPER 2014/08/06 APPROVED BY DATE FSMITH 2014/08/14	TITLE .062/(157) HOUSINGS PLUG & RECEPTACLE 5 CIRCUIT .145/(3.68)		
REV T1			ANGULAR ±1/2°	MATERIAL NO. SEE CHART	DOCUMENT NO. SD-1625-5*	SHEET NO. 1 OF 2	
			DRAFT WHERE APPLICABLE MUST REMAIN WITHIN DIMENSIONS	THIS DRAWING CONTAINS INFORMATION THAT IS PROPRIETARY TO MOLEX INCORPORATED AND SHOULD NOT BE USED WITHOUT WRITTEN PERMISSION			

PLUG	
PART NO.	ENG. NO.
03-06-2054	1625-5P
03-06-2055	1625-5P1
03-06-7054	1625-5PBK
03-06-7055	1625-5P1BK

RECEPTACLE	
PART NO.	ENG. NO.
03-06-1055	1625-5R
03-06-1056	1625-5R1
03-06-6055	1625-5RBK
NOT TOOLED	1625-5R2

LEGEND:

1625-5****

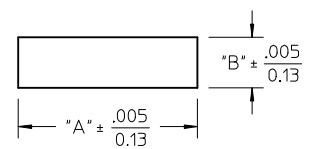
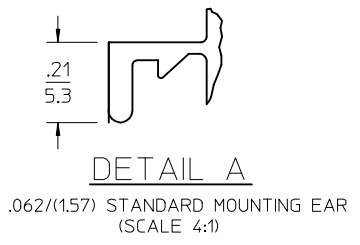
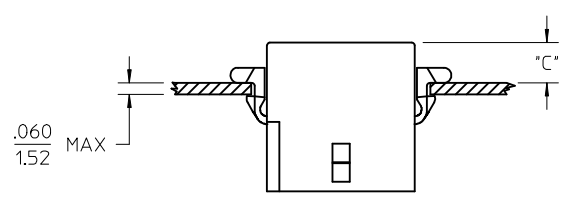
CIRCUIT SIZE

P = PLUG
R = RECEPTACLE

BLANK = WITH STANDARD EARS
1 = WITHOUT EARS
2 = WITH PREBENT EARS

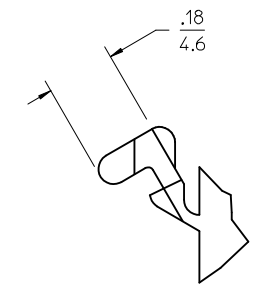
COLOR:

BLANK = NATURAL COLOR
AM = AMBER BK = BLACK BU = BLUE
BN = BROWN GY = GRAY GN = GREEN
OR = ORANGE RD = RED YW = YELLOW



RECOMMENDED PANEL OPENING

HOUSING	DIM. "A"	DIM. "B"	"C" PREBENT EAR	"C" STANDARD EAR
PLUG	1.044/(26.52)	.318/(8.08)	.19/(4.8)	.18/(4.6)
RECEPT.	.940/(23.88)	.265/(6.73)	.21/(5.3)	.20/(5.1)



- NOTES:
1. MATERIAL: NYLON 6/6, UL94V-2, COLOR: SEE LEGEND.
 2. FINISH: NONE.
 3. MOLEX PRODUCT SPEC PS-02-06 APPLIES.
 4. PACKAGING SPECIFICATION: PK-1625-003.
 5. ACCEPTS MOLEX .062 SERIES TERMINALS.
 6. PARTS CONFORM TO CLASS B REQUIREMENTS OF COSMETIC SPECIFICATION PS-45499-002.

SEE SHEET 1 EC NO: UCP2015-0466 DRAWN: JDOX 2014/08/06 CHKD: MKIPPER 2014/08/06 APPR: FSMITH 2014/08/14	QUALITY SYMBOLS 	GENERAL TOLERANCES (UNLESS SPECIFIED)		DIMENSION STYLE	SCALE	DESIGN UNITS	THIRD ANGLE PROJECTION	
				IN/MM	2:1	INCH		
				DRAWN BY	DATE	TITLE		
				CHECKED BY	DATE	.062/(1.57) HOUSINGS PLUG & RECEPTACLE 5 CIRCUIT .145/(3.68)		
		APPROVED BY		DATE				
		FSMITH		2014/08/14				
		ANGULAR ±1/2°		MATERIAL NO.	DOCUMENT NO.	SHEET NO.		
		DRAFT WHERE APPLICABLE MUST REMAIN WITHIN DIMENSIONS		SEE CHART	SD-1625-5*	2 OF 2		
		THIS DRAWING CONTAINS INFORMATION THAT IS PROPRIETARY TO MOLEX INCORPORATED AND SHOULD NOT BE USED WITHOUT WRITTEN PERMISSION						